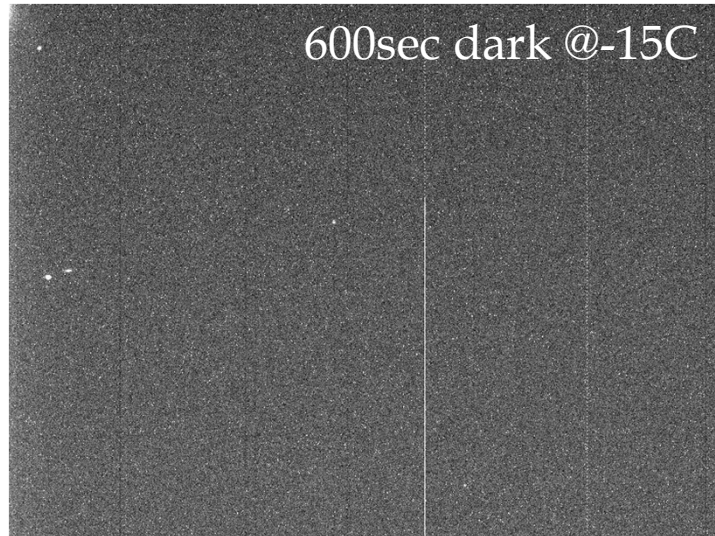


# Sensor Issues: Managing Cosmetic Defects via Cooling



Sensor was grade 1  
when deployed  
Some bad columns  
developed later

R. D. Crisp  
[rdcrisp@earthlink.net](mailto:rdcrisp@earthlink.net)  
[www.narrowbandimaging.com](http://www.narrowbandimaging.com)

